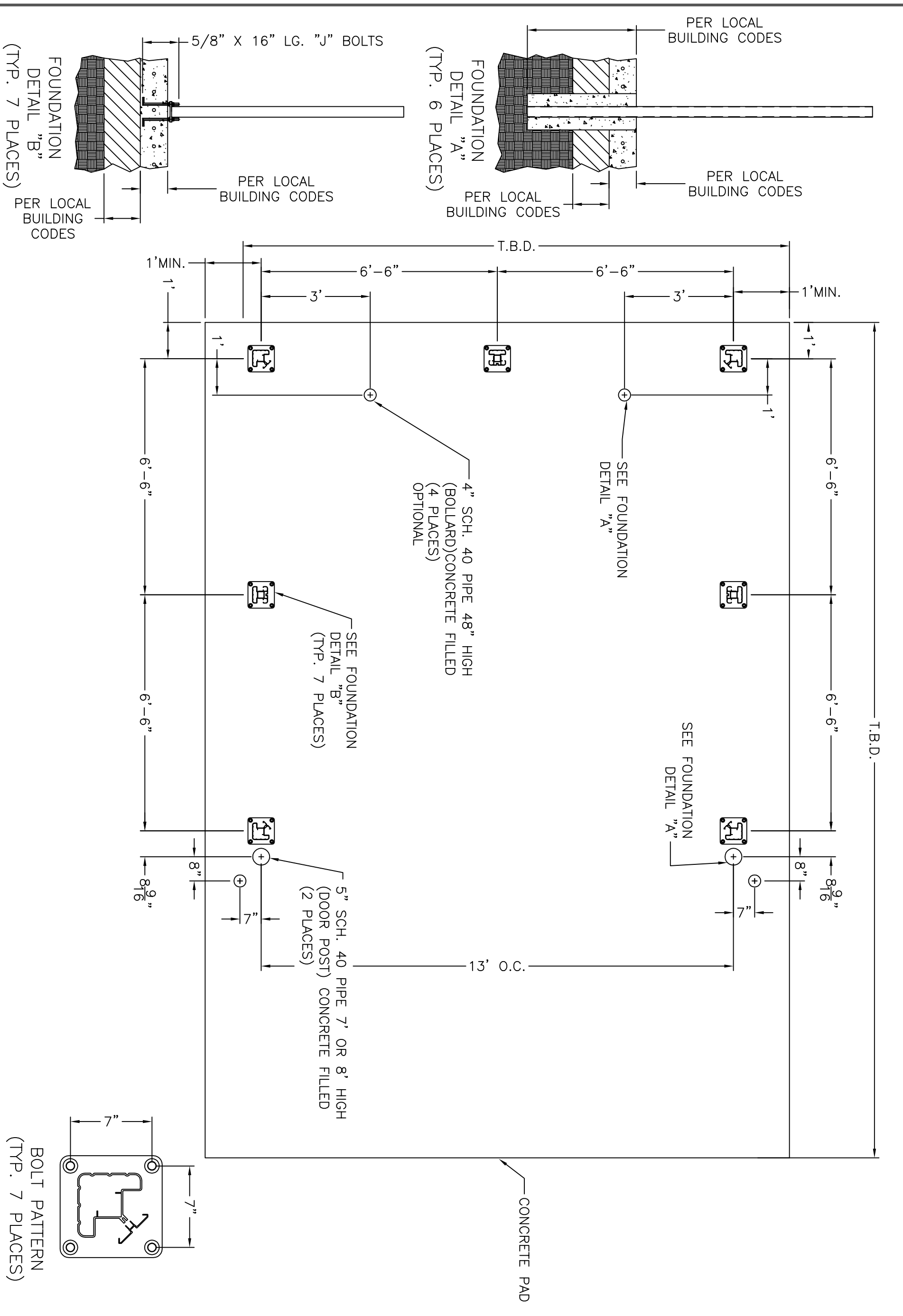


J:\106199\106199.dwg, 11/26/2014 4:45:24 PM, NCONDO



cityscapes
architectural innovations
 4200 LYMAN COURT
 HILLIARD, OH (614) 850-2549

THIS IS AN ORIGINAL UNPUBLISHED DRAWING SUBMITTED FOR YOUR PERSONAL USE IN CONNECTION WITH A PROJECT BEING PLANNED FOR YOU BY CITYSCAPES INTERNATIONAL INCORPORATED IT IS NOT TO BE REPRODUCED, EXHIBITED, OR FABRICATED IN ANY FASHION WITHOUT PERMISSION FROM AN AUTHORIZED OFFICER OF THE COMPANY.

| | | | | | | | |
|--|------|--------------|-----|-------------------------|----------|------------------------------|--|
| PROJECT DESCRIPTION COVRIT SCREEN | | | | REVISION REF.# AND DATE | | SCALE NTS | |
| PAGE DESCRIPTION STANDARD 13' X 13' MODULAR LAYOUT PLAN | | | | A | B | SHEET 1 OF 1 | |
| CLIENT | | | | 4/22/10 | 11/26/14 | DRAWN BY PAS CHECKED BY | |
| CONTACT PERSON | | WORK ORDER # | | | | DATE FILE CREATED 4/22/10 | |
| ADDRESS | CITY | STATE | ZIP | | | DWG FILE # 106199 | |
| JOBSITE LOCATION | | | | | | PART # | |
| ADDRESS | CITY | STATE | ZIP | | | | |