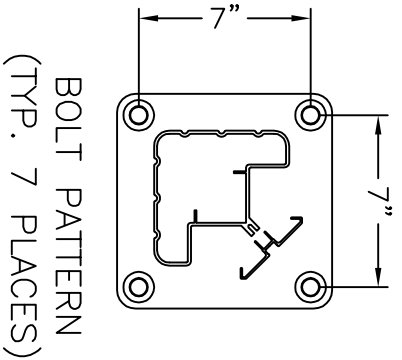
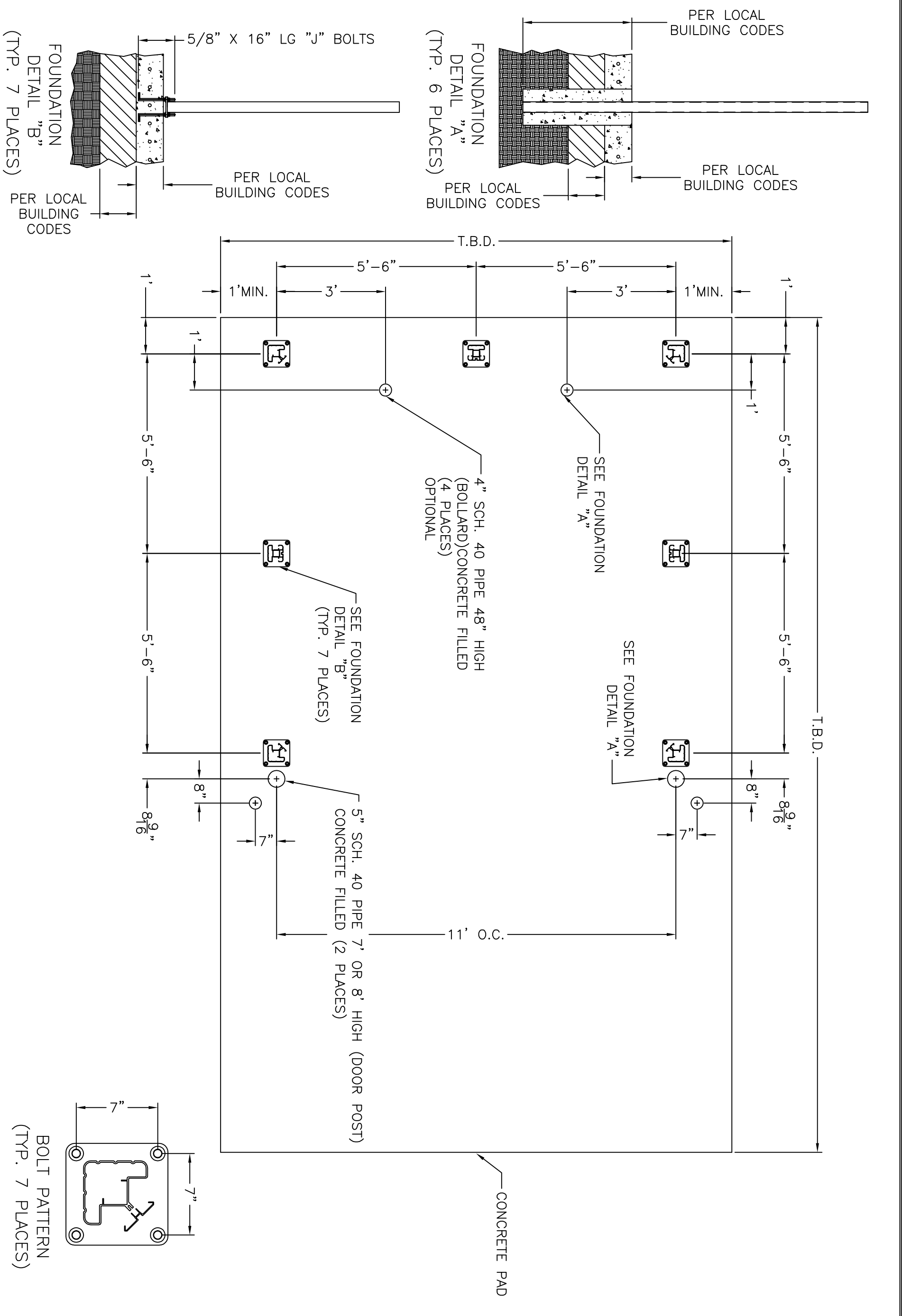


J:\106199\106199.dwg 11/26/2014 4:43:44 PM, NCONDO



cityscapes
architectural innovations
 4200 LYMAN COURT
 HILLIARD, OH (614) 850-2549

THIS IS AN ORIGINAL UNPUBLISHED DRAWING SUBMITTED FOR YOUR PERSONAL USE IN CONNECTION WITH A PROJECT BEING PLANNED FOR YOU BY CITYSCAPES INTERNATIONAL INCORPORATED IT IS NOT TO BE REPRODUCED, EXHIBITED, OR FABRICATED IN ANY FASHION WITHOUT PERMISSION FROM AN AUTHORIZED OFFICER OF THE COMPANY.

PROJECT DESCRIPTION COVRIT SCREEN				REVISION REF.# AND DATE		SCALE NTS	
PAGE DESCRIPTION STANDARD 11' X 11" MODULAR LAYOUT PLAN				A	B	SHEET 1 OF 1	
CLIENT CONTACT PERSON				4/22/10	11/26/14	DRAWN BY PAS CHECKED BY	
WORK ORDER #							
ADDRESS CITY		STATE ZIP				DATE FILE CREATED 4/22/10	
JOBSITE LOCATION						DWG FILE # 106199	
ADDRESS CITY		STATE ZIP				PART #	