

CityScapes[®]
ARCHITECTURAL
INNOVATIONS



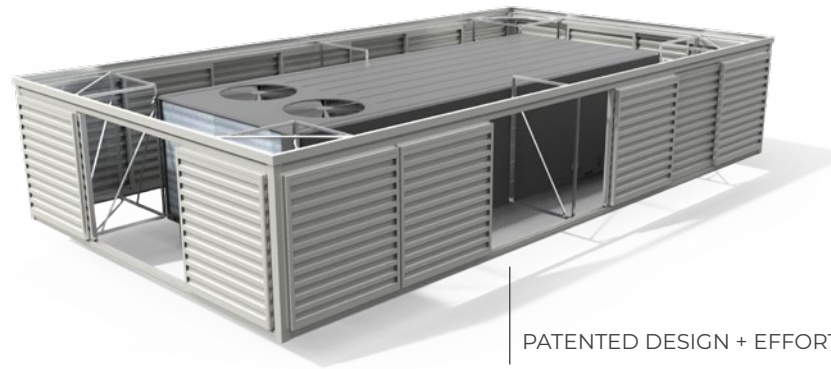
ENVISOR[®]
ROOFTOP SCREENING SYSTEMS



ENVISOR®
— A PATENTED
SCREEN
SYSTEM
WITH ZERO
ROOFTOP
DISRUPTION.

WITH 15+ PANEL STYLES, A CURATED
COLOR PALETTE, AND VERSATILE
MOUNTING OPTIONS — ENVISOR®
ADAPTS TO YOUR VISION.

INNOVATION IN EVERY DETAIL



PATENTED DESIGN + EFFORTLESS ACCESS.

ENVISOR® ROOFTOP SCREENING UNIT-ATTACHED

Envvisor® is a patented rooftop screening system designed with architects in mind. It delivers the clean lines and code compliance your projects demand—without the disruption of roof penetrations. Engineered for strength, adaptability, and seamless aesthetics, Envvisor® gives you the freedom to design without compromise.

- TAILORED ENGINEERING
- PRECISION IN-HOUSE MANUFACTURING
- ORGANIZED, READY-TO-INSTALL SHIPMENTS
- OPTIONAL PROFESSIONAL INSTALLATION
- FULL PROJECT SUPPORT THROUGHOUT

■ ■ ■ ■ ■ WITH 12+ STANDARD + CUSTOM COLOR OPTIONS.



WE DESIGNED ENVISOR® TO SOLVE YOUR TOUGHEST CHALLENGE—SCREENING WITHOUT CUTTING INTO YOUR ROOF.



OUR SIGNATURE ROOFTOP SYSTEMS

BUILT STRONG. FINISHED FLAWLESS. READY FOR ANYTHING.

Crafted from durable aluminum and tough Acrylicap® ABS, our systems combine UV resistance, antimicrobial protection, and a premium powder coat finish. Built to perform, designed to last, and adaptable to any space.

15+ METAL AND ACRYLICAP® ABS PANEL FINISHES



CUSTOM OPTIONS, FULLY TAILORED TO YOUR SPECS



UNIT-ATTACHED

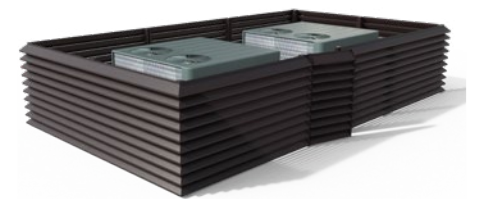
ZERO ROOF DISRUPTION ✓

- Faster installation
- Lower long-term costs



POST-MOUNTED

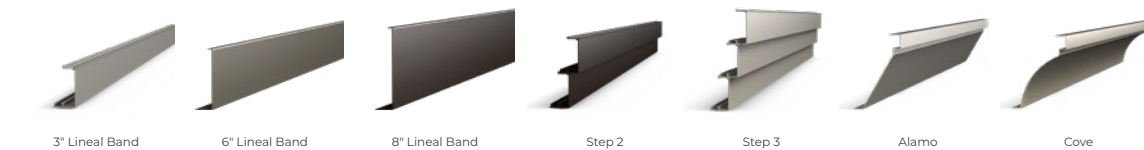
- REQUIRES ROOF PENETRATIONS
- Structural independence
- Long-term durability



Z-FIN (COMING SOON!)

- WITHSTANDS EXTREME CONDITIONS
- 54% open airflow
- Post-mounted systems only

TRIM PROFILES





54% OPEN AIRFLOW AT 6" SPACING

STANDARD LOUVER SPACING IS 6", OFFERING OPTIMAL VENTILATION WHILE MAINTAINING CODE COMPLIANCE.

REINFORCEMENTS AVAILABLE TO MEET MIAMI-DADE WIND LOAD REQUIREMENTS.



ENVISOR® Z-FIN GROUND SCREENING

NEW!

Z-FIN ENVISOR®



Meet the Envisor® Z-Fin system—our latest innovation in rooftop screening. This upgraded system brings modern aesthetics, code-compliant airflow, and extreme durability into one elegant solution.

- .090" PREMIUM EXTRUDED ALUMINUM LOUVERS
- POST-MOUNTED SYSTEMS ONLY
- DURABLE, POWDER-COATED FINISH
- ENGINEERED FOR WIND AND WEATHER

WITH 12+ STANDARD + CUSTOM COLOR OPTIONS.

CONTACT US FOR DETAILS | 877-727-3367



CONTACT US

OUR DIFFERENCE:
WE OBSESS SO YOU DON'T HAVE TO.

ARCHITECTURAL SOLUTIONS ONLY LOOK EFFORTLESS WHEN
SOMEONE IS HANDLING THE HARD PARTS BEHIND THE SCENES.
THAT'S US.

TURNKEY PROJECT SUPPORT
NATIONWIDE INSTALLATION
CUSTOM SITE-SPECIFIC SOLUTIONS
IN-HOUSE DESIGN AND ENGINEERING
COMPLIANCE EXPERTISE



SCAN QR CODE FOR SPEC-READY FILES

[GET CAD DETAILS + CSI SPECS](#)

877-727-3367 | CITYSCAPESINC.COM

BUILD AMERICA, BUY AMERICA ACT (BABAA) CERTIFIED



YOUR VISION. OUR EXPERTISE.

LET'S DESIGN SOMETHING EXTRAORDINARY TOGETHER.

(877) 727-3367

CityScapesInc.com | ARCHITECTURAL INNOVATIONS

BIDS@CITYSCAPESINC.COM