A photograph of a modern building with a large glass entrance and a second-story window. A dark canopy is installed over the entrance. The building has a mix of white, brick, and dark grey siding. The foreground shows a concrete walkway and some greenery.

CityScapes®
ARCHITECTURAL
INNOVATIONS

MARQUEE CANOPIES & AWNINGS

FROM DESIGN TO DONE. NATIONWIDE.

DESIGNED TO ELEVATE, ENGINEERED TO ENDURE.

MARQUEE CANOPIES & AWNINGS BY CITYSCAPES ARE DESIGNED WITH THE ARCHITECT'S VISION IN MIND—DELIVERING CLEAN GEOMETRY, DURABLE FINISHES, AND SEAMLESS INTEGRATION WITH MODERN FAÇADES. ENGINEERED FOR LONG-TERM PERFORMANCE AND AESTHETIC PRECISION, OUR CANOPIES ELEVATE ENTRYWAYS AND OUTDOOR SPACES WHILE ALIGNING WITH THE DEMANDS OF CODE, CLIMATE, AND CREATIVITY.

BUILD AMERICA, BUY AMERICA ACT (BABAA) CERTIFIED





IF YOU CAN IMAGINE IT, WE CAN BUILD IT.

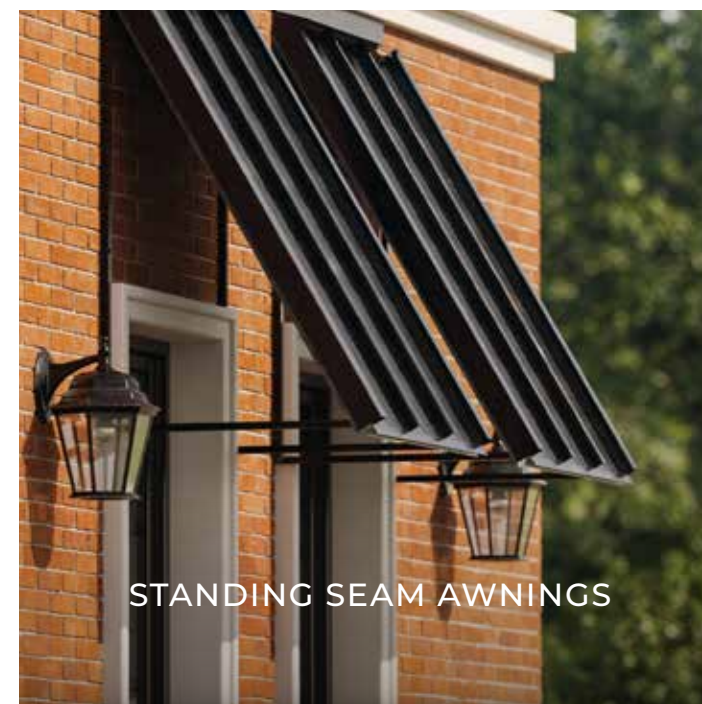
- Advanced fabrication methods ensure tight fits and durable finishes
- Multiple mounting styles, and optional integrated LED lighting
- Designed to enhance visibility and foot traffic
- Custom fabricated in the U.S.A. with rapid turnaround
- Optional rain gutters, signage integration, or mixed materials



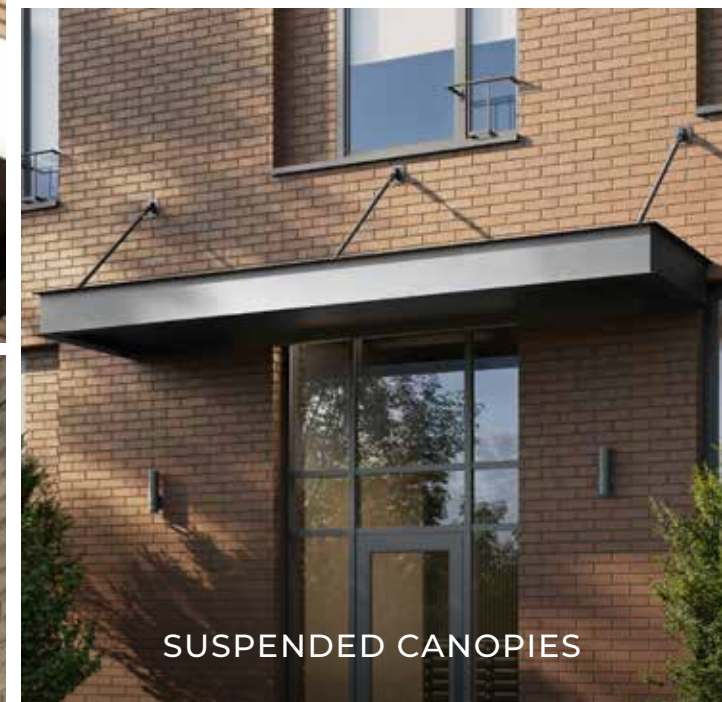
CANTILEVER CANOPIES



BAHAMA SHUTTERS



STANDING SEAM AWNINGS



SUSPENDED CANOPIES



CUSTOM SIGNAGE MARQUEES



OUR SUSPENDED AWNINGS & CANOPIES COMBINE NEXT-GENERATION ENGINEERING AND PREMIUM ALUMINUM FRAMES TO CREATE, HIGH-PERFORMANCE OVERHEADS THAT ARE BUILT TO OUTLAST THE ELEMENTS.

Suspended Canopies

SUSPENDED IN STYLE: CANOPIES THAT DO MORE THAN HANG AROUND

With a wide range of contemporary infill options, custom colors, and optional integrated lighting, each canopy floats effortlessly above your space while anchoring your brand's image. Strong, stylish, and smartly designed for the long haul; these canopies aren't just hanging out—they're making a statement.





BAHAMA SHUTTERS BY CITYSCAPES DELIVER THE ISLAND VIBE WITH INDUSTRIAL-GRADE STRENGTH.



Bahama Shutters

CATCH SOME SHADE — WITH
SERIOUS STYLE

Crafted from high-quality extruded aluminum and protected by high-performance finishes, these shutters aren't just breezy—they're built to last. Designed to tilt and shade exactly where you need it, Bahama Shutters offer both a casual flair and serious performance against sun, wind, and rain. Perfect for coastal, hospitality, and boutique environments where looks matter just as much as longevity.



Standing Seam Awnings

CLASSIC LINES. NEXT-GEN
PERFORMANCE.

Standing Seam Awnings offer a crisp, architectural silhouette that never goes out of style. From boutique hotels to educational campuses, these canopies deliver the iconic silhouette architects love, backed by the next generation of long-lasting engineering.



IDEAL FOR BOTH CONTEMPORARY AND TRADITIONAL PROJECTS, THESE
AWNINGS BRING STRUCTURE, SHADE, AND A DISTINCTLY ELEVATED
LOOK TO ANY FAÇADE.



MINIMALIST. MODERN. MONUMENTAL. CANTILEVER CANOPY ALSO KNOWN AS FLOATING BOX AWNINGS — PROVIDE RELIABLE SHADE AND WEATHER PROTECTION WITH A SLEEK, ARCHITECTURAL EDGE.



Cantilever Canopies

FLAT-OUT IMPRESSIVE: CANOPIES & AWNINGS WITH AN EDGE

With clean geometry and a visually weightless form, Cantilever Canopies & Awnings bring refined elegance to any exterior. Their crisp, horizontal lines appear to hover, creating a bold architectural statement with minimal visual weight. Built for longevity and designed to impress, they offer a striking blend of simplicity, sophistication, and lasting performance.



Design Spaces with NatureScreen®, Café Walls & Planx® Planters

Nature Reimagined™—Planx® Planters bring form, function, and foliage together. Constructed from composite PVC or powder-coated aluminum, our modular planters offer a clean, elevated look with no maintenance worries.

Ideal for:

- RESTAURANT PATIOS
- ROOFTOP TERRACES
- PUBLIC SEATING AREAS
- ENTRY COURTYARDS





LET'S BUILD SOMETHING FOR A LIFETIME

PROFESSIONAL-GRADE PRODUCTS
READY TO MAKE YOUR NEXT PROJECT PERFECT

CityScapesInc.com | ARCHITECTURAL INNOVATIONS

(877) 727-3367

BIDS@CITYSCAPESINC.COM

CITYSCAPESINC.COM